



The Whitfield

GAZETTE



IN THIS ISSUE:

- Events
- Exercise
- Guinea Pigs

...and so much more!

A MESSAGE FROM US

We've had a busy month here at Whitfield, but we're very much looking to the future - inside there's information about all sorts of upcoming events!

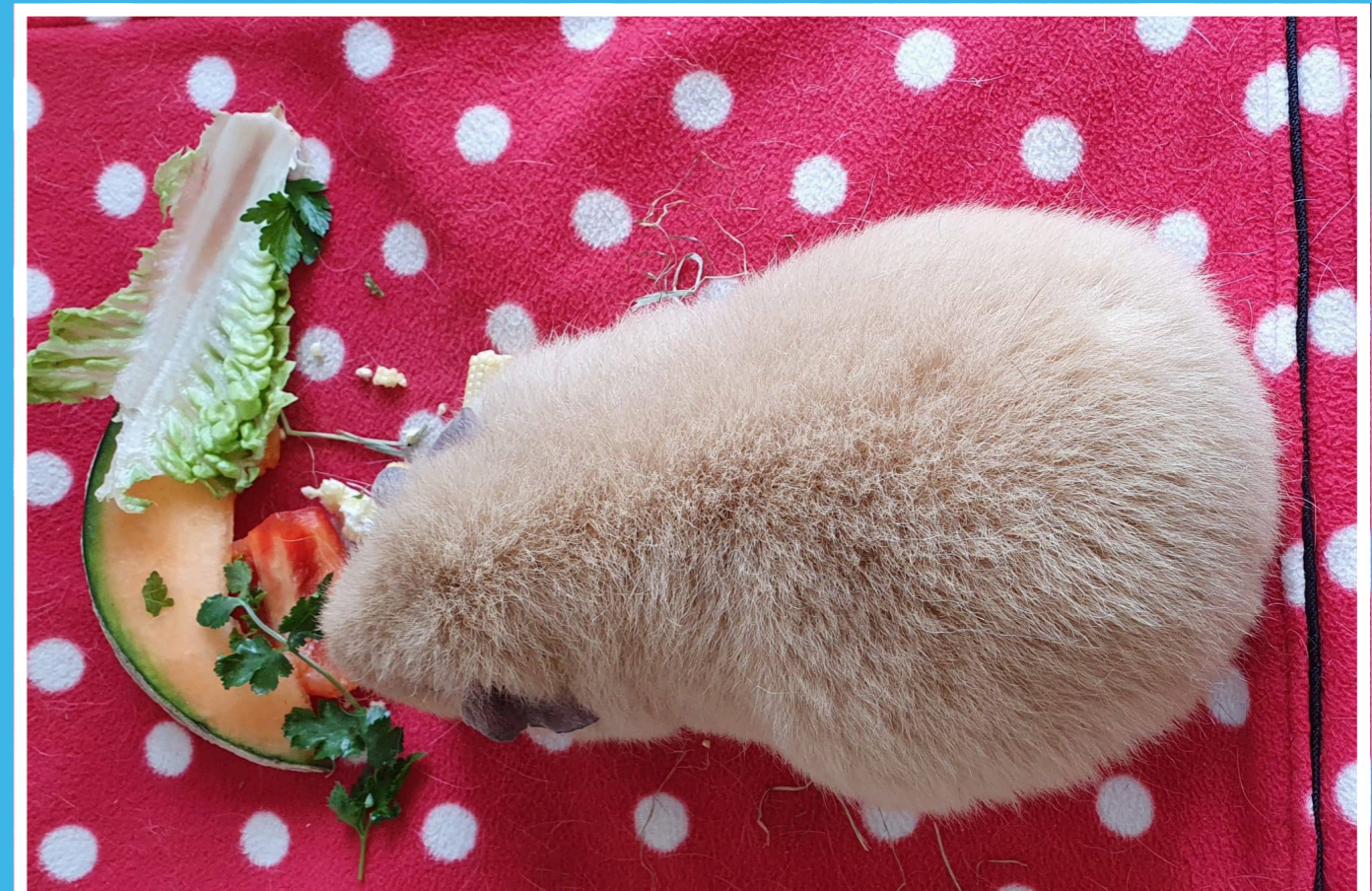


The Cavies Return!

On the 15th of April, we were visited once again by the guinea pigs from Cuddly Cavies - take a look at what they got up to below!



Cuddly Cavies have had a new addition to their family of guinea pigs, and our residents simply fell in love with them!



Having a spot of lunch, portioned and prepared by our residents!

A Ball of a Time



Our residents let out their inner Serena Williams or Andy Murray in this exercise!

Our residents enjoyed a lively keepy-uppy style game, batting the ball into the air from their chairs and seeing how long they could keep it going. It was a great way to get everyone involved, encouraging gentle

movement, coordination and plenty of shared moments around the room.

Simple games like this are a brilliant way to have a laugh and enjoy something a little different together!

PARTY INVITATION

Afternoon tea Wednesday 6th May 3.30PM

We invite all to come and join us for an afternoon tea.

We have music by the amazing Barry Goss at 2pm

Followed by sandwiches and cake, tea and coffee at 3.30pm

ALL ARE WELCOME





ENJOY

VE day BBQ 8th

May 12pm

music 2PM by

Colby Gaffney

COME AND SING ALOMG WITH
US

VE day BBQ 12pm followed by music from Colby Gaffney at
2PM all welcome to come and join us in the sun with some fo
and music

VE DAY BBQ



Sai Care Homes

Whitfield

RESIDENTIAL HOME



Lalitha Kumar
Operations Manager



Lesley Sievwright
Whitfield Manager



Scan me
to visit our website



01304 820236



whitfield@saicarehomes.com



www.saicarehomes.com

107 Sandwich Road

Whitfield

CT16 3JP

Inspected and rated by





Sai Care Homes

Love all, serve all

Regulated by

