

February/March 2025



The Hatfield Express

Welcome to our February & March 2025 edition

...and welcome to the first edition of The Hatfield Express!

Where in the past we've shared a newsletter with our sister homes, this year marks the first time we've had our own newsletter - and we sure hope you enjoy this new format!

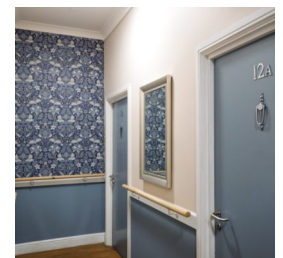


IN THIS ISSUE

Birthdays Galore,

Staff Highlights,

And Plenty Of Smiles!





Fifty & Fabulous!

This month, all of us at Hatfield Lodge wished Claire, one of our senior care assistants, a very happy 50th birthday!

A much-beloved member of the Hatfield Lodge family, there isn't a moment where Claire doesn't go above and beyond to ensure our residents feel safe, comfortable & fulfilled.

Thank you for everything you do Claire, and we hope you enjoyed your cake!

Managers attend prestigious care conference!

Our management team recently returned from the Managers Conference 2025, held at Wyboston Lakes Resort in Bedfordshire on March 10th and 11th. This annual event, hosted by the National Care Forum (NCF) and Skills for Care, brings together care managers from across the country to discover new ways to improve care.

This year's hot topics included the role of artificial intelligence (AI) in care, adopting more tech-friendly activities in the homes, and innovative learning and development approaches.

Our team came back inspired and full of ideas to enhance the lives of your loved ones at Sai Care Homes!





Hatfield Lodge

A Sai Care Home

Contact Us



01303 253253



hatfieldlodge@saicarehomes.com



www.saicarehomes.com

Or, alternatively, write to us:

Hatfield Lodge: 1-3 Trinity Gardens, Folkestone, CT20 2RP

Head Office: 18-20 Manor Road, Folkestone, CT20 2SA

We love hearing your compliments about the care and support we provide to your loved ones. However, it's also very important for us to hear your concerns and complaints. If you ever have a problem, please contact the Manager of your home or get in touch with our Head Office at 01303 249933 - we are here to help.

Meet the Managers



Lalitha Kumar
Operations Manager



Heather St Leger
Hatfield Lodge Manager





INDULGE IN UNRIVALLED LUXURY AT THE DOVER MARINA HOTEL

The Royal Suite at the Dover Marina Hotel offers an unparalleled blend of elegance and comfort, featuring an expansive Emperor bed and a stunning panoramic balcony overlooking the English Channel.

Indulge in exquisite dining at two Marco Pierre White restaurants, unwind at the tranquil Waterfront Spa, or stay active in our state-of-the-art fitness center for a truly unforgettable stay.



SCAN TO FIND OUT MORE





MARCO PIERRE WHITE
ESTD 1856
Wheeler's
FISH & CHIPS

FISHERMAN'S LUNCH

FISH & CHIPS OR A FISHCAKE & CHIPS,
& A CUP OF COFFEE

ONLY £13.95

 **MARCO
PIERRE
WHITE**
ESTD 1961

DOVER MARINA HOTEL & SPA
WATERLOO CRESCENT
DOVER
CT17 9BP



Sai Care Homes

Love all, serve all

Inspected and rated by



Scan to view online