

February/March 2025



Tudor Lodge Times

Welcome to our February & March 2025 edition

...and welcome to the first edition of
Tudor Lodge Times!

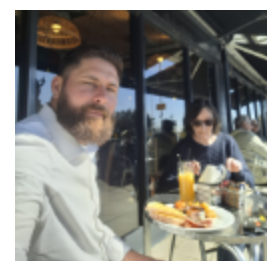
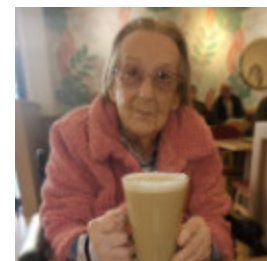


Where in the past we've shared a
newsletter with our sister homes, this
year marks the first time we've had our
own newsletter - and we sure hope you
enjoy this new format!



IN THIS ISSUE

Caffeinated Days Out,
Incredible Easter Eyewear,
Birthdays Galore,
Staff Highlights,
And Plenty Of Smiles!



Birthday cheer for Linda!

Our resident Linda recently celebrated her birthday in style, surrounded by positive vibes and plenty of sweet treats!

Linda started her special day with an al fresco breakfast in the sunshine, accompanied by John, our home manager. The pair enjoyed a delightful morning meal together, basking in the warm morning light.

Back in the communal area, Linda was treated to a special birthday surprise - a cult-classic Colin the caterpillar cake, accompanied by a chocolate selection box. Wearing her favorite navy sweater and surrounded by a lovely potted plant, Linda looked delighted with the birthday celebrations, and all of us at Tudor Lodge hope she had a brilliant day!





Spec-tacular Easter Crafts

As we get closer to Easter, the communal area transformed into a hub of creativity this month as residents designed their own Easter-themed eyewear - all stylish enough to put Ray Ban out of business!

Armed with plain glasses frames, glue sticks and a massive bag of bits and bobs, everyone embraced their artistic sides and transformed their blank canvases into fashion pieces the Easter Bunny himself would be jealous of!

Residents didn't just make glasses, but all sorts of Easter attire - residents also crafted colorful Easter bonnets - perfect for the Spring sunshine!



A Kathy-nated resident!

Because nothing beats a latte on a frosty day - just ask Kathy!

On a particularly frosty day, Kathy, one of our residents, bundled up and ventured out for a well-earned coffee break at Costa Coffee in Folkestone town centre - the perfect refuge from the chill!

A steaming vanilla latte was her choice for the day, and it went down a treat. The comforting warmth of the drink made the frosty outing well worth it. Kathy's already eyeing up her next visit - perhaps with a cappuccino or a cheeky mocha in hand next time!



Managers attend widely acclaimed care conference

Our management team recently returned from the Managers Conference 2025, held at Wyboston Lakes Resort in Bedfordshire on March 10th and 11th. This annual event, hosted by the National Care Forum (NCF) and Skills for Care, brings together care managers from across the country to exchange ideas and discover new ways to improve care.

This year's hot topics included the role of artificial intelligence (AI) in care, adopting more tech-friendly activities in the homes, and innovative learning and development approaches.

Our team came back inspired and full of ideas to enhance the lives of your loved ones at Sai Care Homes!





Tudor Lodge
A Sai Care Home

Contact Us



01303 249933



tudorlodge@saicarehomes.com



www.saicarehomes.com

Or, alternatively, write to us:
18-20 Manor Road, Folkestone, CT20 2SA

We love hearing your compliments about the care and support we provide to your loved ones. However, it's also very important for us to hear your concerns and complaints. If you ever have a problem, please contact the Manager of your home or get in touch with our Head Office at 01303 249933 - we are here to help.

Meet the Managers



Lalitha Kumar
Operations Manager



John Woodward
Tudor Lodge Manager

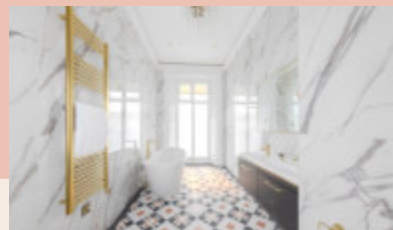




INDULGE IN UNRIVALLED LUXURY AT THE DOVER MARINA HOTEL

The Royal Suite at the Dover Marina Hotel offers an unparalleled blend of elegance and comfort, featuring an expansive Emperor bed and a stunning panoramic balcony overlooking the English Channel.

Indulge in exquisite dining at two Marco Pierre White restaurants, unwind at the tranquil Waterfront Spa, or stay active in our state-of-the-art fitness center for a truly unforgettable stay.



SCAN TO FIND OUT MORE





MARCO PIERRE WHITE
ESTD 1856
Wheeler's
FISH & CHIPS

FISHERMAN'S LUNCH

FISH & CHIPS OR A FISHCAKE & CHIPS,
& A CUP OF COFFEE

ONLY £13.95

 **MARCO
PIERRE
WHITE**
ESTD 1961

DOVER MARINA HOTEL & SPA
WATERLOO CRESCENT
DOVER
CT17 9BP



Sai Care Homes

Love all, serve all

Inspected and rated by



Scan to view online