

February/March 2025



The Whitfield Express

Welcome to our February & March 2025 edition

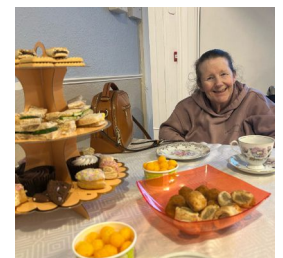
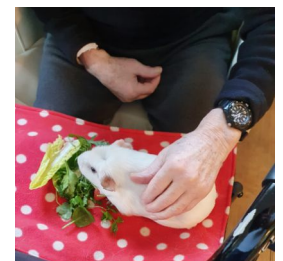
...and welcome to the first edition of The Whitfield Express!

Where in the past we've shared a newsletter with our sister homes, this year marks the first time we've had our own newsletter - and we sure hope you enjoy this new format!



IN THIS ISSUE

Visits From Furry Friends,
Homemade Sweet Treats,
Staff Highlights,
And Plenty Of Smiles!



Sandwich Squad

Julie and Joan join forces in Whitfield's kitchen!

Cooks Julie and Joan joined forces in the kitchen to prepare a much-loved meal for everyone at the home. Together, they made a traditional, delectable syrup sponge cake and a selection of sandwiches that brought smiles, and filled the stomachs, of all the residents.

We featured Julie and Joan's baking escapades on our social media pages, with plenty of positive comments from staff and families alike! Residents appreciated the home-made vibe of Julie and Joan's food. Staff hope to see more residents getting involved in the kitchen in the future, dishing up delights for everyone at Whitfield!





Guinea pigs bring paw-sitive vibes for our residents

On the 18th of February, our clients welcomed back the much-beloved guinea pigs from Cuddly Cavies!

The guinea pigs came in all different colours and sizes, each with their own lovable personality. Residents had the chance to help serve the guinea pigs their lunch, offering them fresh salad leaves which were happily munched away. The room was filled with laughter & chatter as residents cuddled with their furry friends!

Our residents can't wait to see their furry friends again - until then we'll be reminiscing about their nose twitches and their squeaks!



Managers attend prestigious care conference!

Our management team recently returned from the Managers Conference 2025, held at Wyboston Lakes Resort in Bedfordshire on March 10th and 11th. This annual event, hosted by the National Care Forum (NCF) and Skills for Care, brings together care managers from across the country to discover new ways to improve care.

This year's hot topics included the role of artificial intelligence (AI) in care, adopting more tech-friendly activities in the homes, and innovative learning and development approaches.

Our team came back inspired and full of ideas to enhance the lives of your loved ones at Sai Care Homes!



A Mother's Day Bonanza!

On March 26th, our residents gathered with their families for an early Mother's Day celebration, complete with tea and scones!

Our attendees were also treated to a medley of music from Barry Goss, a long-time favourite of our residents who never fails to get the room dancing!





Whitfield
A Sai Care Home

Contact Us



01304 820236



whitfield@saicarehomes.com



www.saicarehomes.com

Or, alternatively, write to us:

Whitfield Residential: 107 Sandwich Road, Whitfield, CT16 3JP
Head Office: 18-20 Manor Road, Folkestone, CT20 2SA

We love hearing your compliments about the care and support we provide to your loved ones. However, it's also very important for us to hear your concerns and complaints. If you ever have a problem, please contact the Manager of your home or get in touch with our Head Office at 01303 249933 - we are here to help.

Meet the Managers



Lalitha Kumar
Operations Manager



Lesley Sievwright
Tudor Lodge Manager

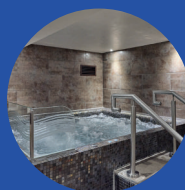


Our services

Immerse yourself in our luxurious spa services tailored for your relaxation.

- Facial Treatments
- Ayurvedic Treatments
- Body Massages
- Wellness Facilities
- Sunbed Sessions

Discover a sanctuary of relaxation and rejuvenation



Jacuzzi



Sauna



Spa & Stay
Packages

Visit us



Dover Marina Hotel & Spa
Waterloo Crescent
Dover, CT17 9BP



01304 203633



spa@dovermarinahotel.co.uk





Sai Care Homes
Love all, serve all

Inspected and rated by



Scan to view online