



Sai Care Homes

July 2025

The Hatfield

EXPRESS



A MESSAGE FROM US

Inside, we're celebrating musically talented residents, sharing exciting news about care teams across our group being nominated for awards, and showcasing the latest upgrades to our care delivery devices!

IN THIS ISSUE:

- Nominations
- Harmonicas
- Arts & Crafts

...and tons of bad puns!

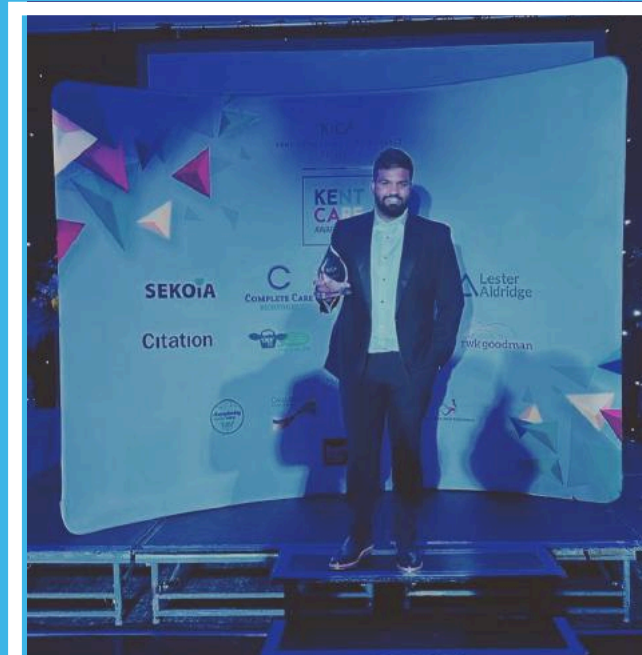
Upcoming Awards!



We can't wait to see if Team Hatfield come back with any trophies!

You may or may not know that Hatfield Lodge is part of the Kent Integrated Care Alliance (KICA for short), an independent body that supports care providers and organises the Kent Care Awards.

This year's Kent Care Awards are on September 5th - until then, we've dug out some photos from previous years - head office apologises in advance to anyone featured 😊



Gowtham won 2024's Nutrition Champion award!



COVID meant no ceremony in 2020, but Sai Care Homes staff still got recognised!



Here's a throwback that's bound to get the editor in trouble - families of long-time residents might recognise John, our former manager who's now at Tudor Lodge!

A Spool Day In

Our creative residents have been getting crafty lately, turning everyday items like string and plastic sewing spools into colourful necklaces, bracelets, and more!

Not only is this a fun and imaginative way to spend an afternoon, but it also gives fine motor skills a gentle workout.



Also in the communal area, Gwen's been busy embracing the summer vibes - she's been giving everyone's surroundings a splash of colour with some lovely flowers.

As much as our residents love a day out, sometimes a cosy day in's just what the doctor ordered!



A Rail Of a Time!

This month, our communal area gave King's Cross a run for its money as we wheeled out some miniature trains!

Our residents (especially train enthusiast Alan) loved assembling the track in different paths and taking the helm of the train with the remote control.

The old-fashioned carriages gave our clients a flashback to days of old, as our staff looked on in disbelief - a train running on time, and without signal failures!

After seeing the joy in everyone's faces, perhaps a day out at the transport museum or the *Romney, Hythe and Dymchurch Railway* is due!

Har- Monarchy!

We often have musicians visit our home to entertain residents - but this time, the music came from much closer to home.

Charlie recently treated a couple of our staff members to a special performance, proudly playing God Save the King on the harmonica - a performance fit for any Royal Family private function!

Want to listen for yourself?
Scan or tap the QR code to
watch Charlie
perform on our
Facebook page!



Bonus Photos



The Hatfield Express isn't the only newspaper that's popular in our home!



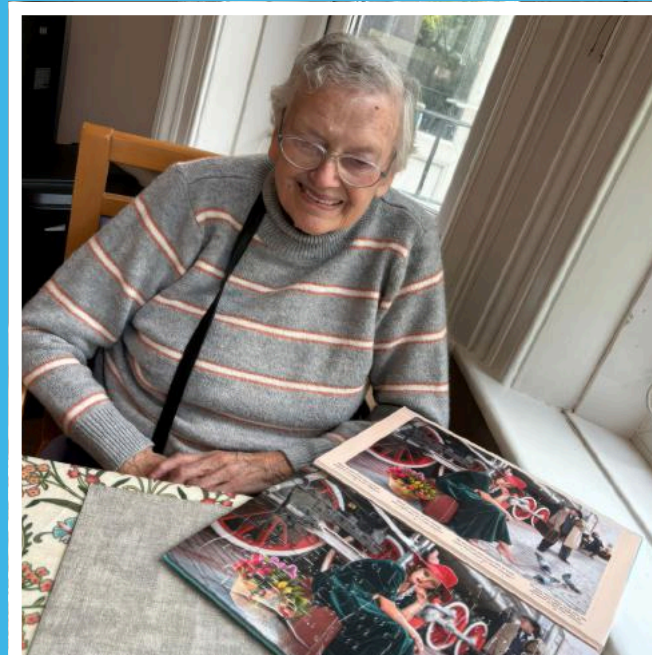
The wonderful Fred making sure everyone's happy with the activities!



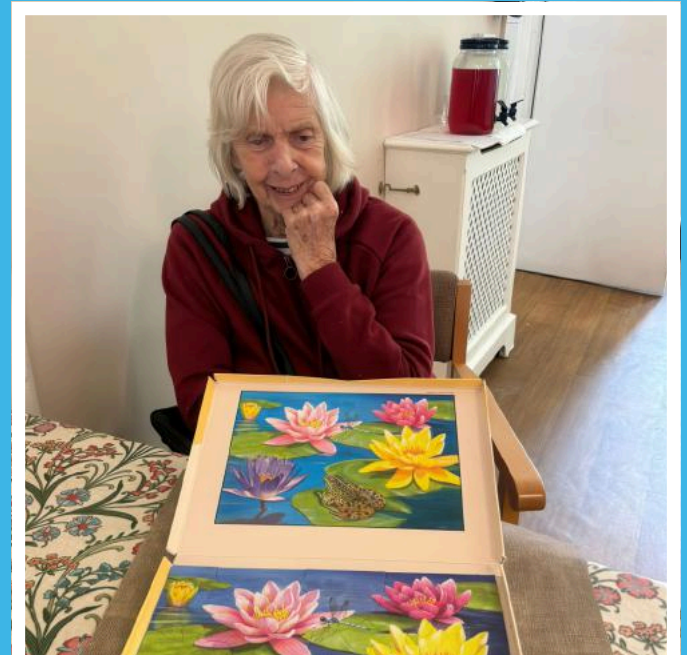
Another communal area classic at Hatfield Lodge - bowling!



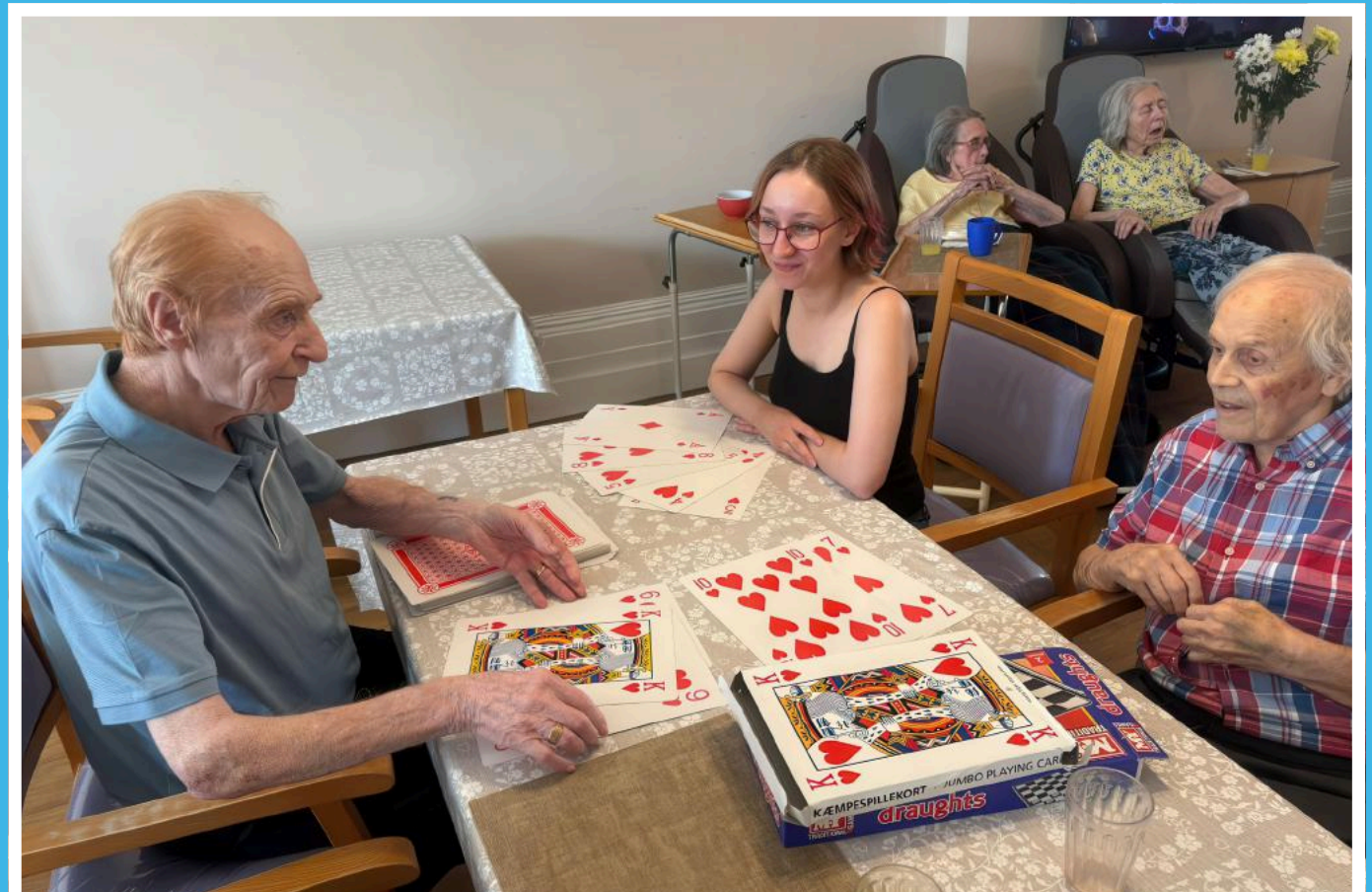
Some more fantastic flower arrangements!



Sylvia was thoroughly proud of herself for independently finishing this puzzle...



and so was Gwen - just look at that smile!



Our harmonica man Charlie teaching the others a card game.



New Devices, Better Care

We're excited to be rolling out our brand-new care delivery devices - designed to make life easier for our staff and even better for our residents.

With more devices to go around, our team can be quicker, more responsive, and spend less time hunting for a free device - and more time focused on what matters

most: delivering first-class, person-centred care.

These new gadgets come with longer battery life, faster performance, and improved energy efficiency, helping us double down even more on our commitments to the environment!

Hatfield Lodge

CARE HOME



Lalitha Kumar
Operations Manager



Heather St Leger
Hatfield Lodge Manager



Scan me
to visit our website



01303 253253



hatfieldlodge@saicarehomes.com



www.saicarehomes.com

1-3 Trinity Gardens
Folkestone
CT20 2RP



Sai Care Homes

Love all, serve all

Regulated by



CareQuality
Commission