



# The Whitfield

## GAZETTE



### A MESSAGE FROM US

Aside from delivering first-class person centred care and enjoying the warm weather, Whitfield's staff & residents have been preparing for some big events coming up later on in the year - find out more inside!

### IN THIS ISSUE:

- Nominations
- Guinea Pigs
- Innovation

*...and so much more!*



# Award Nominations!



Hopefully the next time Lesley (right) poses for a camera is when she wins an award!

You may or may not know that Whitfield Residential Home is part of the Kent Integrated Care Alliance (KICA for short), an independent body who supports care providers and organises the Kent Care Awards!

This year, Lesley's been nominated for **Registered Manager Of The Year**, and we reckon she's in it to win it!

This year's Kent Care Awards are on September 5<sup>th</sup> - until then, we've dug out some photos from previous years!



Gowtham, who supplies our fruit & veg, won 2024's Nutrition Champion award!

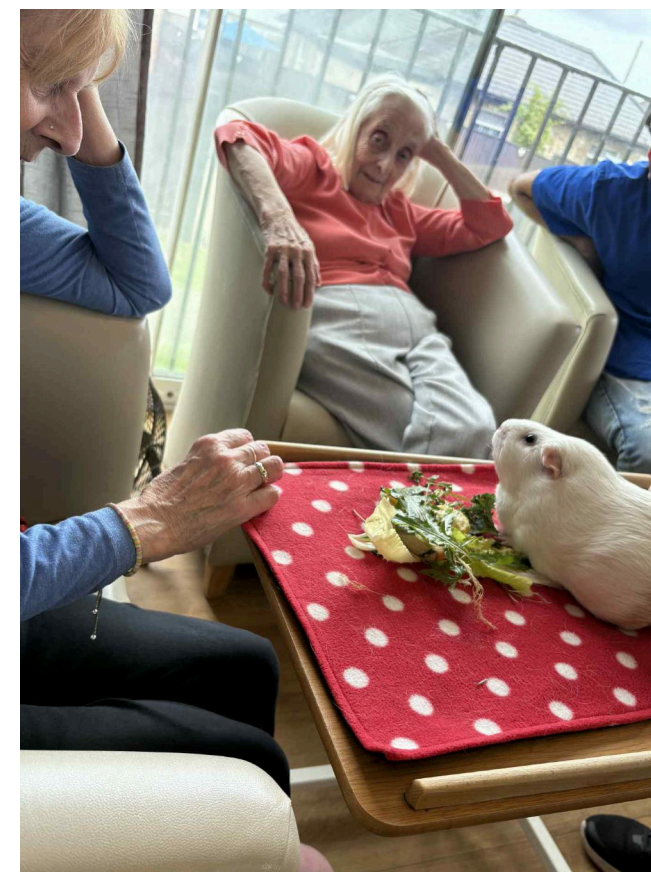


COVID meant no ceremony in 2020, but our staff still got recognised!



Here's a throwback that's bound to get the newsletter editor in trouble - the Sai Care Homes team, circa 2019!





## Cuddly Corner

Since our lovely guinea pig friends from Cuddly Cavies have become such frequent visitors, we thought it was only right they had their very own section in our newsletter - the Cuddly Corner!

Every month, expect tons of fluffy fun right here!





# New Devices, Better Care

We're excited to roll out our brand-new care delivery devices - designed to make life easier for our staff and even better for our residents.

With more devices to go around, our team can be quicker, more responsive, and spend less time hunting for a free device - and more time focused on what matters most: delivering great care.

These new gadgets come with longer battery life, faster performance, and improved energy efficiency.



Sai Care Homes

## Whitfield RESIDENTIAL HOME



**Lalitha Kumar**  
Operations Manager



**Lesley Sievwright**  
Whitfield Manager



*Scan me*  
to visit our website



01304 820236



whitfield@saicarehomes.com



www.saicarehomes.com

**107 Sandwich Road**  
**Whitfield**  
**CT16 3JP**





# Sai Care Homes

Love all, serve all

Regulated by



**CareQuality**  
Commission