



The Whitfield

GAZETTE



IN THIS ISSUE:

- Zesty Drinks
- Sweet Treats
- ...and potential trophies!

A MESSAGE FROM US

The weather might have calmed down a bit at the time of publishing this edition, but May has certainly been a month for embracing the great outdoors!



Exciting Nominations!

Sai Care Homes has been nominated for **THREE** awards at this year's Dementia Care Awards!

Two members of staff from our home have been nominated for individual awards - Imam Salish has been nominated for the Dementia Care Home Worker award, while Taz Nicholson has been nominated for the Dementia Frontline Leader award - we're all immensely proud of the both of them!

The organisation itself has been nominated for the **Dementia Friendly Business** award, which recognises businesses that have developed and implemented incentives that support individuals living with

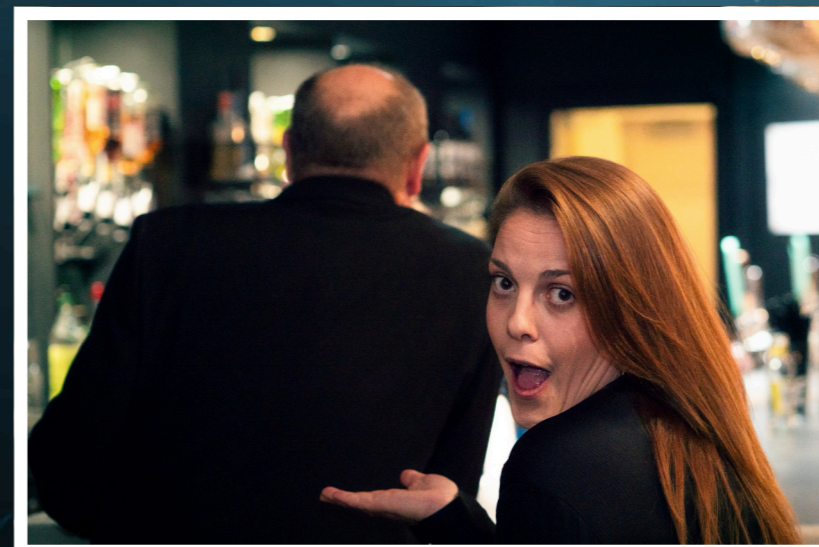
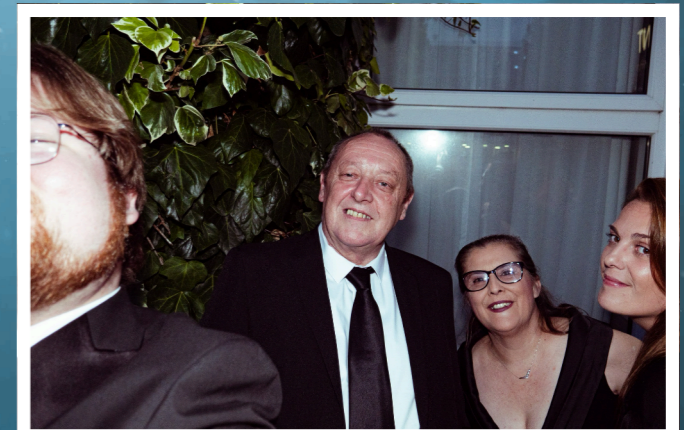
dementia who use their services. Operations Manager and Hatfield Lodge Manager, Lalitha Kumar, will be representing Sai Care Homes for this award.



Deputy Manager, Taz, is up for the Dementia Frontline Leader award!

A little throwback

to the 2025 Kent Care Awards, the last big ceremony we went to!



Top photos copyright Rich Broome Photography

Celebrating VE Day

Our garden was full of sunshine, smiling faces and the smell of a proper barbecue, as residents and guests came together to enjoy the occasion. There was plenty of food on offer, cold drinks in hand and lots of friendly conversation.

After our VE Day barbecue, we were treated to a fantastic crooner performance from local superstar Colby Gaffney, which was thoroughly enjoyed by staff, residents and guests alike!

A massive thank you to everyone who helped out and joined us!



A Scone-sational Afternoon

We recently hosted another wonderful afternoon tea for our residents.

Everyone came together to enjoy a massive spread of sandwiches, sweet treats and other nibbles, all set out beautifully for a relaxed and social afternoon. Oh, and of course we had enough tea to quench half of Dover!

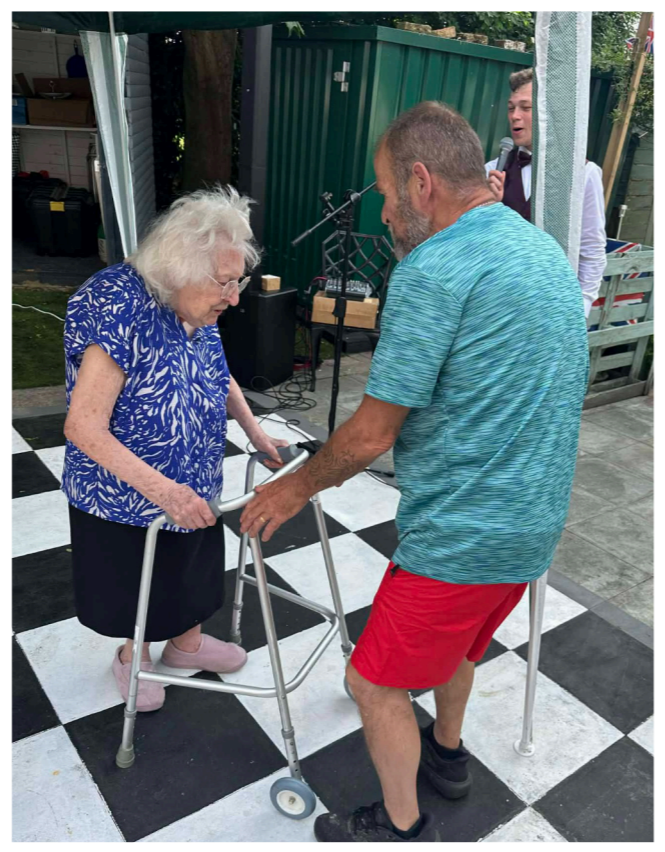
Thank you to all the family and friends who joined us and helped make it such a enjoyable occasion. We love putting on these lovely, calm afternoons.



Mocktail Extravaganza

What a fantastic afternoon we had with our Mocktail Party! 🍹

With the lovely weather on our side, residents, family members and staff came together to enjoy a great selection of mocktails, plenty of delicious food and wonderful live entertainment from Colby Gaffney (we can tell he's becoming a fan favourite!) A big thank you to everyone who joined us and made it such a brilliant success. It was lovely to see such a great turnout and enjoy the occasion together.



Chair Tennis Fun



Channeling our inner Andy Murray, all from the comfort of an armchair!

Our chair tennis sessions have been a wonderful way to keep residents gently active while still enjoying a relaxed and sociable atmosphere. Using lightweight rackets and soft balls, residents can take part from the comfort of their chairs, making it accessible

and enjoyable for everyone.

There's always plenty of laughter along the way too, with friendly rallies, light competition and shared encouragement making each session something to look forward to!



Sai Care Homes

Whitfield

RESIDENTIAL HOME



Lalitha Kumar
Operations Manager



Lesley Sievwright
Whitfield Manager



Scan me

to visit our website



01304 820236



whitfield@saicarehomes.com



www.saicarehomes.com

107 Sandwich Road

Whitfield

CT16 3JP

Inspected and rated by





Sai Care Homes
Love all, serve all

Regulated by

