



Sai Care News

January 2025

www.saicarehomes.com

FULL OF FESTIVITIES

See them all inside!

**A DECEMBER
TO REMEMBER**

FESTIVE JOY FILLS OUR CARE HOMES!

A HOLLY JOLLY HATFIELD!

On Christmas Day, Hatfield Lodge was the picture of festive cheer as staff and residents came together to celebrate the holiday season. In the home's communal areas, a delicious Christmas lunch was served up for all the residents - from turkey to trimmings, the meal was a treat for the taste buds!

As the afternoon unfolded, everyone gathered around for a fun-filled Christmas party. Residents enjoyed exchanging gifts, and the sounds of Christmas music filled the air as everyone danced and sang along.

After walking past & seeing and hearing all the commotion from outside, Santa Claus fancied stopping by to lift the spirits of the residents even more!

The day was a testament to the hard work and dedication of the staff at Hatfield Lodge, who went above and beyond to create a memorable experience for all residents. It was a beautiful reminder of the joy of being together during the holiday season, and we look forward to many more festive gatherings in the years to come!





THERE'S 'SNOW PLACE' LIKE TUDOR LODGE!

Clients get together for the most special day of the year

This Christmas, Tudor Lodge was filled with festive cheer as residents and staff gathered together to celebrate. In the communal area, staff in Christmas jumpers joined residents to pull crackers, share laughs, and enjoy a delicious Christmas lunch. The holiday spirit was in full swing, with plenty of food, fun, and good company.

As the day went on, everyone enjoyed opening gifts and dancing along to Christmas music. The strong sense of community at Tudor Lodge made this a Christmas to remember, filled with warmth, laughter, and joy for all. It was a beautiful reminder of the joy of being together during the holiday season.



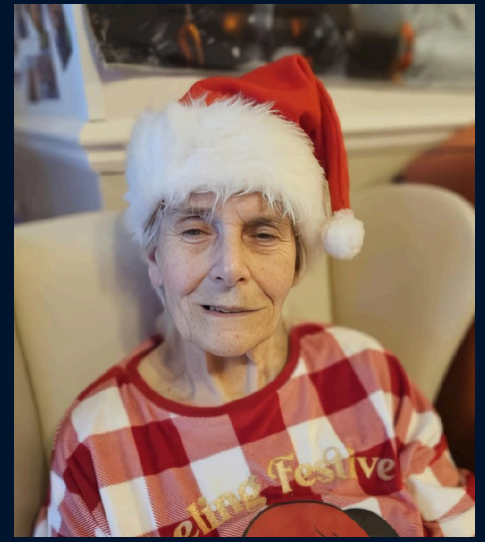


WALKING IN A WHITFIELD WONDERLAND



This festive season, we spread a little extra cheer at Whitfield Residential Home. Our residents enjoyed a special Christmas dinner, complete with all their favorite treats and festive entertainment!

But it was the little touches that made this Christmas truly special. Our staff went above and beyond to ensure every resident felt loved and included, from the warm smiles to the thoughtful gifts. It's moments like these that remind us of the true meaning of Christmas: community, kindness, and a little bit of joy. We're grateful for the chance to have shared in this special time with our residents and would like to thank them for making it so memorable!



SAI-SONS GREETINGS

On December 12th, the festive spirit was in full swing at the Dover Marina Hotel as Sai Care Homes' staff gathered for their annual Christmas party.

The evening kicked off with a heart-warming awards ceremony, with director Seelan personally honouring standout staff members. Entertainment came courtesy of Scott, a regular performer at Tudor Lodge and Hatfield Lodge, followed by a DJ who kept the dance floor buzzing. Staff members of all ages showcased their moves, with some even daring the Macarena!

This year's award winners were:

Employee Of The Year: **Taz**

Carer Of The Year: **Jo**

Support Person Of The Year: **Wendy G**

Newcomer Of The Year: **Natalie**

Team Of The Year: **Hatfield Lodge**

Here's to another year of success for Sai Care Homes—and to many more unforgettable Christmas parties at Dover Marina Hotel!

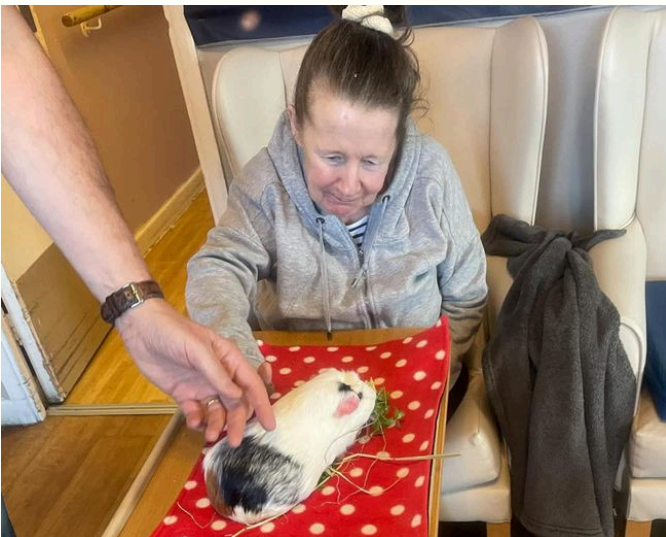


FURRY FRIENDS BRING JOY TO RESIDENTS

Whitfield Residential Home recently had the pleasure of hosting a heartwarming visit from Cuddly Cavies, an organisation dedicated to providing therapeutic guinea pig experiences to care homes, schools, and individuals throughout the UK.

The Cuddly Cavies team introduced our residents to a delightful group of guinea pigs, whose calm and friendly nature quickly captivated everyone. These charming little animals brought joy and comfort, sparking smiles and creating memorable moments of connection. It was truly wonderful to witness the happiness and special bonds our residents formed with their furry visitors.

Did you know that when guinea pigs are happy, they can purr just like cats?



Puzzle Corner

WHERE'S LESLEY?

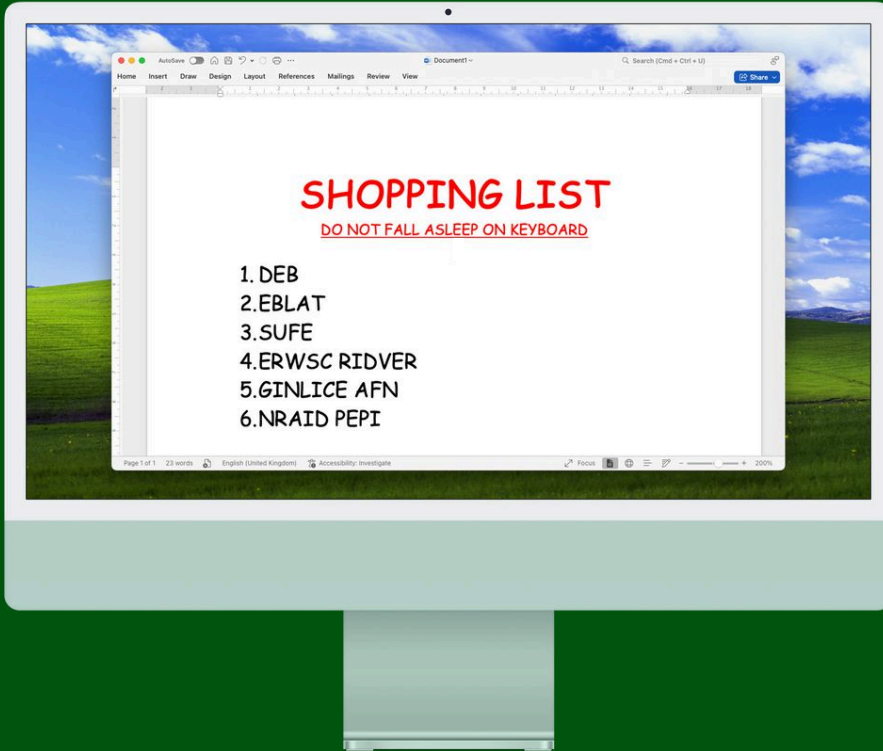


Can you find Lesley amongst this massive crowd of people?



SCRAMBLED SIMON

Simon, the maintenance man at Hatfield Lodge, accidentally fell asleep on his keyboard, leaving his shopping list completely jumbled. Can you help him sort it out before Heather sends him off to the shops?



SUDOKU

7	3					2	5	
					2	8		
5	2			7			1	9
					9			
	5	2		8	7			
9							7	
			5		4			
	8					4		
2							6	1

Fill in the puzzle so that every row across, every column down and every 9 by 9 box contains the numbers 1 to 9.



Sai Care Homes
Love all, serve all

Contact Details

Tudor Lodge - 01303 251159
18-20 Manor Road, Folkestone, CT20 2SA

Hatfield Lodge - 01303 253253
1-3 Trinity Place, Folkestone, CT20 2RP

Whitfield - 01304 820236
107 Sandwich Road, Whitfield, CT16 3JP

www.saicarehomes.com
info@saicarehomes.com



Sai Care Homes

Meet the Managers



Lalitha Kumar
Operations Manager



Heather St Leger
Hatfield Lodge Manager



John Woodward
Tudor Lodge Manager



Lesley Sievewright
Whitfield Manager

What people are saying about us

'I cannot thank the management and staff enough for the excellent care that has been given to my mother since the beginning of admission'



'Since Mum has been at Hatfield Lodge EMI/Residential Home she has become more like our mother, she laughs and has taken an interest in people again'

Source: carehome.co.uk

We love hearing your compliments about the care and support we provide to your loved ones. However, it's also very important for us to hear your concerns and complaints. If you ever have a problem, please contact the Manager of your home or get in touch with our Head Office at 01303 249933 - we are here to help.

Puzzle Corner

Answers



Scrambled Simon answers:

1. BED
2. TABLE
3. FUSE
4. SCREW DRIVER
5. CEILING FAN
6. DRAIN PIPE

7	3	8	6	9	1	2	5	4
1	6	9	4	5	2	8	3	7
5	2	4	8	7	3	6	1	9
8	7	3	1	6	9	5	4	2
4	5	2	3	8	7	1	9	6
9	1	6	2	4	5	3	7	8
6	9	1	5	2	4	7	8	3
3	8	7	9	1	6	4	2	5
2	4	5	7	3	8	9	6	1

Our services

Immerse yourself in our luxurious spa services tailored for your relaxation.

- Facial Treatments
- Ayurvedic Treatments
- Body Massages
- Wellness Facilities
- Sunbed Sessions

Discover a sanctuary of relaxation



Jacuzzi



Sauna



Spa & Stay Packages

Visit us



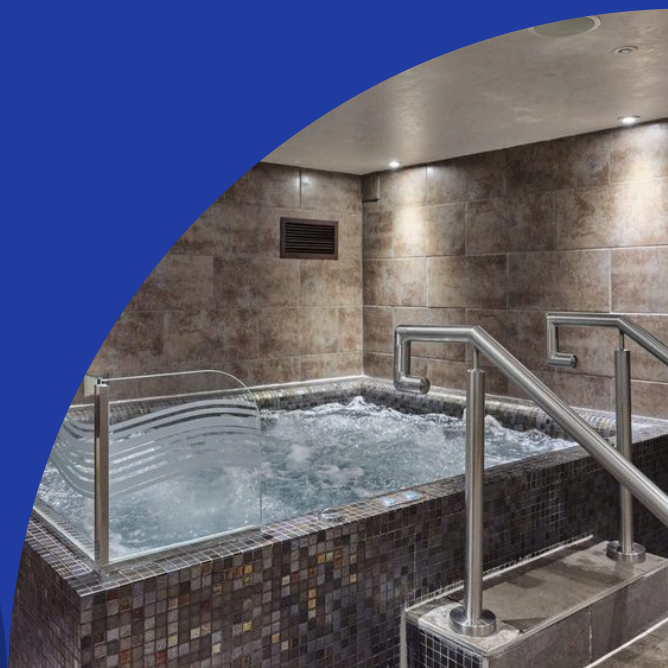
Dover Marina Hotel & Spa
Waterloo Crescent
Dover, CT17 9BP



01304 203633



spa@dovermarinahotel.co.uk





WHEN IN DOUBT

Choose Steak.



MARCO PIERRE WHITE
MR. WHITE'S
ENGLISH CHOPHOUSE ESTD 2015



Sai Care Homes

Love all, serve all

Inspected and rated by



**CareQuality
Commission**



Scan to view this file digitally